

WATERLOW PARK NATURE HUNT

WALK AROUND THE NATURE AREA AND SEE IF YOU CAN SPOT ALL OF THE THINGS ON THIS PAGE
WHEN YOU SEE ONE OF THEM TICK IT OFF YOUR SHEET
HAPPY HUNTING!

NAME



SPIDER



SQUIRREL



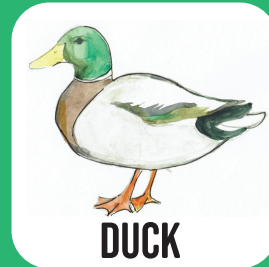
FEATHER



SNAIL



MAGPIE



DUCK



oak leaf
OAK LEAF



ROBIN



BAT HOUSE



BEE



ivy leaf
IVY LEAF



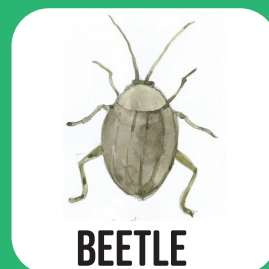
PINE CONE



BIRD BOX



WOODLOUSE



BEETLE